

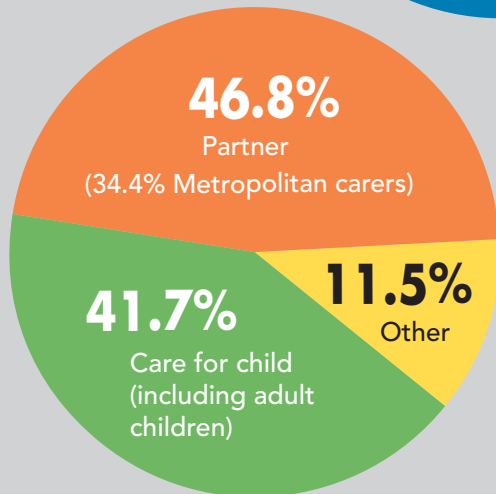
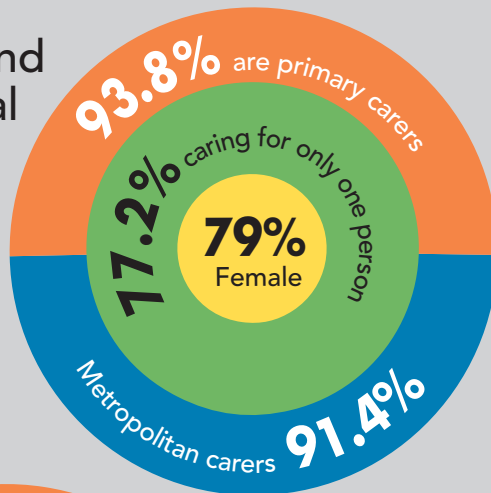
## Carers living in rural and regional NSW

7735 carers surveyed - 2751 located in rural and regional areas

### Carer Profile



Rural and regional carers

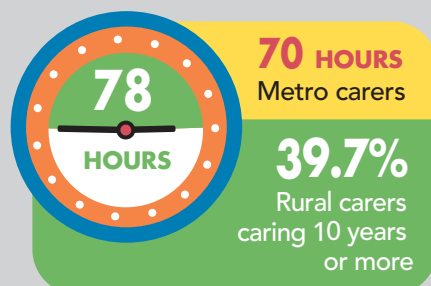


Who they care for

Average age of carer



Average time caring per week



### Finances



Household income



53.7%

Rural carers have an annual household income of less than \$50,000

Financial stress



49.8%

Of regional and rural carers experienced no financial stress in last 12 months

In financial distress



Spending



24.1%

Spend **more** money than received in a month



34.8%

Unable to raise \$2,000 in a week for something important

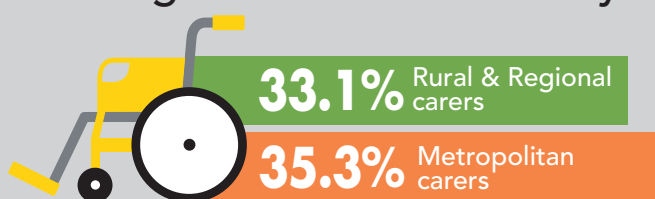
## Carers living in rural and regional NSW

7735 carers surveyed - 2751 located in rural and regional areas

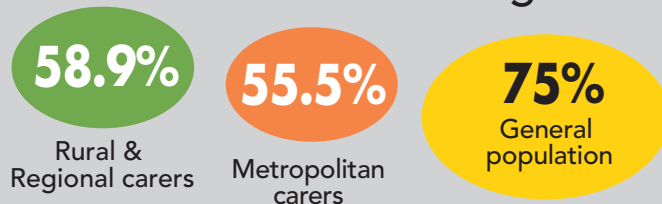
### Health and Wellbeing



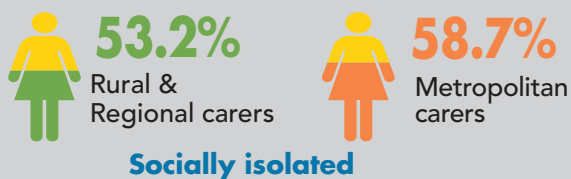
#### Long-term illness/disability



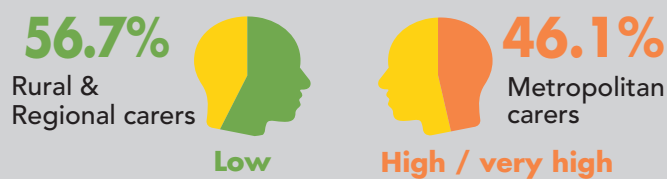
#### Level of wellbeing



#### Level of social isolation



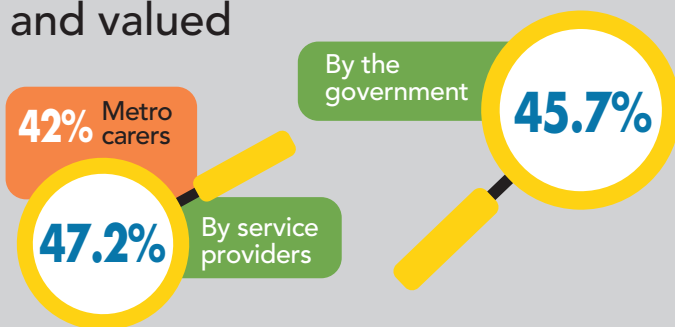
#### Psychological distress



### Recognition and Support



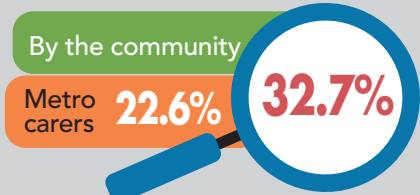
#### Carer role **NOT** recognised and valued



#### Support service type used



#### Carer role recognised and valued



#### Carer support

